

# ETSI EN 301 040 V2.1.1 (2006-03)

---

*European Standard (Telecommunications series)*

## **Terrestrial Trunked Radio (TETRA); Security; Lawful Interception (LI) interface**

---



---

**Reference**

REN/TETRA-06132

---

**Keywords**

data, security, TETRA, voice

**ETSI**

---

650 Route des Lucioles  
F-06921 Sophia Antipolis Cedex - FRANCE

Tel.: +33 4 92 94 42 00 Fax: +33 4 93 65 47 16

Siret N° 348 623 562 00017 - NAF 742 C  
Association à but non lucratif enregistrée à la  
Sous-Préfecture de Grasse (06) N° 7803/88

---

**Important notice**

Individual copies of the present document can be downloaded from:

<http://www.etsi.org>

The present document may be made available in more than one electronic version or in print. In any case of existing or perceived difference in contents between such versions, the reference version is the Portable Document Format (PDF). In case of dispute, the reference shall be the printing on ETSI printers of the PDF version kept on a specific network drive within ETSI Secretariat.

Users of the present document should be aware that the document may be subject to revision or change of status. Information on the current status of this and other ETSI documents is available at

<http://portal.etsi.org/tb/status/status.asp>

If you find errors in the present document, please send your comment to one of the following services:

[http://portal.etsi.org/chaicor/ETSI\\_support.asp](http://portal.etsi.org/chaicor/ETSI_support.asp)

---

**Copyright Notification**

No part may be reproduced except as authorized by written permission.  
The copyright and the foregoing restriction extend to reproduction in all media.

© European Telecommunications Standards Institute 2006.  
All rights reserved.

**DECT**<sup>TM</sup>, **PLUGTESTS**<sup>TM</sup> and **UMTS**<sup>TM</sup> are Trade Marks of ETSI registered for the benefit of its Members.  
**TIPHON**<sup>TM</sup> and the **TIPHON logo** are Trade Marks currently being registered by ETSI for the benefit of its Members.  
**3GPP**<sup>TM</sup> is a Trade Mark of ETSI registered for the benefit of its Members and of the 3GPP Organizational Partners.

# Contents

Intellectual Property Rights .....	5
Foreword.....	5
Introduction .....	5
1 Scope .....	6
2 References .....	7
3 Definitions and abbreviations.....	8
3.1 Definitions .....	8
3.2 Abbreviations .....	10
4 User (LEA) requirements - the administrative interface .....	11
4.1 Non-disclosure .....	11
4.2 Identification of the identity to be intercepted.....	11
4.3 Result of interception .....	12
4.3.1 Network validity of result of interception.....	12
4.3.2 Identification of result of interception .....	12
4.3.3 Format of result of interception .....	12
4.3.4 Content of result of interception .....	12
4.3.5 Auditing of interception facilities .....	13
4.4 Location information .....	13
4.5 Time constraints .....	14
4.6 Service transparency.....	14
4.7 LI interface instances.....	14
4.8 LI interface events .....	14
5 Description of internal TETRA LI interface .....	15
5.1 Stage 1 description of TETRA LI technical interface .....	15
5.1.1 Description.....	15
5.1.2 Procedures.....	15
5.1.2.1 Provision/withdrawal .....	15
5.1.2.2 Normal procedures.....	15
5.1.2.2.1 Activation/deactivation/registration .....	15
5.1.2.2.2 Invocation and operation .....	15
5.1.2.2.3 Interrogation .....	15
5.1.3 Interaction with TETRA supplementary services .....	15
5.1.4 Interaction with other supplementary services.....	15
5.2 Stage 2 description of TETRA LI technical interface .....	16
5.2.1 Functional model .....	16
5.2.2 Information flow sequences.....	16
5.2.2.1 LEA control interactions and information flows.....	17
5.2.2.1.1 LI_ACTIVATE_req .....	17
5.2.2.1.2 LI_ACTIVATE_conf .....	18
5.2.2.1.3 LI_MODIFY_req .....	18
5.2.2.1.4 LI_MODIFY_conf .....	18
5.2.2.1.5 LI_STATUS_ind .....	19
5.2.2.2 Target signalling and traffic interactions and information flows .....	19
5.2.2.2.1 TARGET_ACTIVITY_MONITOR_ind.....	20
5.2.2.2.2 TARGET_COMMS_MONITOR_ind .....	20
5.2.2.2.3 T_TRAFFIC_ind .....	21
5.2.2.2.4 CT_TRAFFIC_ind .....	21
6 Data provision and encoding.....	21
6.1 Identification of result of interception ( <i>tLIInstanceid</i> ).....	21
6.2 Provision of identities.....	22
6.2.1 Target.....	22
6.2.2 Co-target .....	22

6.3	Provision of details of services used and their associated parameters .....	23
6.3.1	Circuit mode services (U-plane) .....	23
6.3.2	Data services (C-plane).....	23
6.3.2.1	Short data (unacknowledged).....	23
6.3.2.2	Short data (acknowledged).....	24
6.3.2.3	Specific Connectionless Network Service (SCLNS) .....	24
6.3.2.4	Connection Oriented Network Service (CONS) .....	24
6.3.2.5	Internet Protocol.....	24
6.4	Provision of those signals emitted by the target invoking additional or modified services.....	25
6.4.1	Authentication.....	25
6.4.2	OTAR .....	25
6.4.3	Enable/Disable .....	25
6.4.4	Registration.....	26
6.4.5	Migration .....	26
6.4.6	Roaming.....	26
6.4.7	Supplementary services .....	26
6.5	Provision of time-stamps for identifying the beginning, end and duration of the connection .....	26
6.6	Provision of actual destination and intermediate directory numbers if call has been diverted .....	27
6.7	Provision of the U-plane content of the communication from and to the target.....	27
6.8	Provision of location information.....	27
6.8.1	Mobile users of TETRA .....	27
6.8.2	Fixed line users of TETRA .....	28
<b>Annex A (informative): Explanatory diagrams .....</b>		<b>29</b>
A.1	General network arrangements.....	29
A.2	Service providers .....	30
A.3	Service across multiple SwMIs .....	31
A.4	Service across international borders.....	32
<b>Annex B (informative): Void .....</b>		<b>33</b>
<b>Annex C (informative): Example encoding of target behaviour .....</b>		<b>34</b>
C.1	Call setup from target to TETRA co-target.....	34
C.2	Target registration .....	34
<b>Annex D (informative): Void .....</b>		<b>36</b>
<b>Annex E (normative): ASN.1 Data definitions .....</b>		<b>37</b>
<b>Annex F (informative): Bibliography.....</b>		<b>41</b>
History .....		43

---

## Intellectual Property Rights

IPRs essential or potentially essential to the present document may have been declared to ETSI. The information pertaining to these essential IPRs, if any, is publicly available for **ETSI members and non-members**, and can be found in ETSI SR 000 314: "*Intellectual Property Rights (IPRs); Essential, or potentially Essential, IPRs notified to ETSI in respect of ETSI standards*", which is available from the ETSI Secretariat. Latest updates are available on the ETSI Web server (<http://webapp.etsi.org/IPR/home.asp>).

Pursuant to the ETSI IPR Policy, no investigation, including IPR searches, has been carried out by ETSI. No guarantee can be given as to the existence of other IPRs not referenced in ETSI SR 000 314 (or the updates on the ETSI Web server) which are, or may be, or may become, essential to the present document.

---

## Foreword

This European Standard (Telecommunications series) has been produced by ETSI Technical Committee Terrestrial Trunked Radio (TETRA).

The 06132v203\_C01\_\_ASN1.asn file is contained in archive en\_301040v020101p0.zip which accompanies the present document.

<b>National transposition dates</b>	
Date of adoption of this EN:	24 February 2006
Date of latest announcement of this EN (doa):	31 May 2006
Date of latest publication of new National Standard or endorsement of this EN (dop/e):	30 November 2006
Date of withdrawal of any conflicting National Standard (dow):	30 November 2006

---

## Introduction

This update to the present document has been prepared to address the following issues:

- ASN.1 definition corrections.
- ASN.1 provision as deliverable based module.
- Closer alignment to handover capabilities described in ES 201 671 [8].
- Refinement of the Internal management interface.
- Renaming of internal interfaces to align with ES 201 158 [9].
- Deletion of SDL as there is no real added value in the model.
- Removal of hanging paragraphs from introduction of each clause (compliance with ETSI drafting rules).

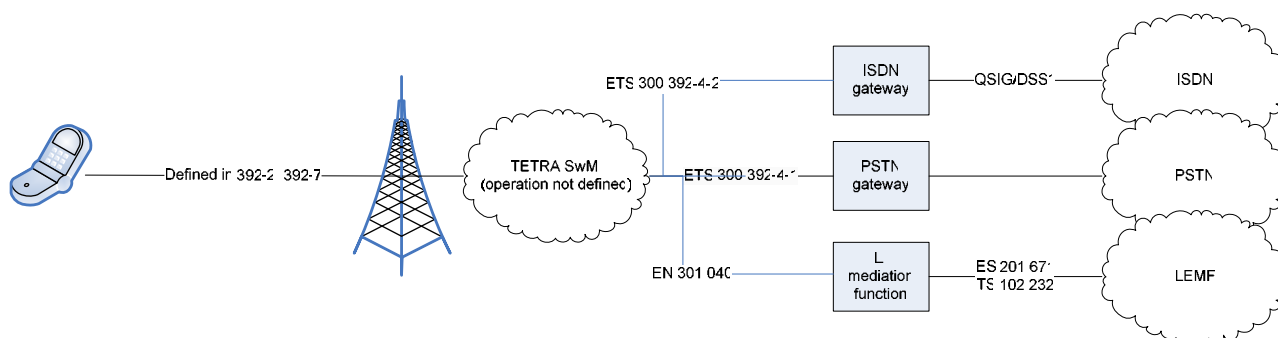
In addition every effort has been made to make the terminology consistent with other interception domain specifications.

# 1 Scope

The present document describes the data content of a Lawful Interception interface in a TETRA system. It provides the requirements and specification of the interface within a TETRA system for the purpose of providing data to Law Enforcement Agencies (LEAs) in the area of Lawful Interception (LI) of communications.

The present document describes the internal LI interface of a TETRA network, and does not specify the means by which data is delivered to the LEA or to its designated Law Enforcement Monitoring Facility (LEMF). However the internal LI interface is defined in such a way that data may be carried transparently on most networks.

NOTE 1: In this context "internal" means within the boundary of the TETRA infrastructure. The boundary may extend in such a manner that the TETRA LI function is remote from other components of the SwMI, or it may be co-located with other SwMI components.



**Figure 1: Model of TETRA interception**

The general reference model of figure 1 shows that the overall LI interface lies between the LEMF and the TETRA infrastructure (SwMI) and is composed of both the Handover Interface (described in ES 201 671 [8] and/or TS 102 232 [11]) and the internal interception interface. The subject of the present document is the internal LI interface that lies between the TETRA infrastructure and the mediation function.

The provision of a Lawful Interception interface for TETRA is a national option, however where it is provided it shall be provided as described in the present document.

The Handover Interface may be the subject of national regulation and therefore the mediation function may be a matter of national regulation.

The present document describes the data content of the information flows of the intercepted activity from the TETRA system using ASN.1 but without respect to the encoding rules which are determined by the handover interface adopted.

The present document is structured as follows:

- clause 4 outlines the essential requirements for the TETRA LI interface;
- clause 5 presents the structural and behavioural models of the LI interface;
- clause 6 presents the data model and allocation behaviour in the LI interface.

The present document applies to TETRA services where access to the communication of TETRA Subscriber Identities (TSIs) is available in a network (Switching and Management Infrastructure (SwMI) or Radio Packet Data Infrastructure (RPDI)). Whilst this does not prohibit lawful interception of TETRA Direct Mode Operation (DMO) it removes the liability of network operators and service providers to provide a result of interception when communication does not make use of their networks.

The present document describes the normal and exceptional operation in each of the three operational phases of T-LI:

1) Setup:

The actions taken within the TETRA network to establish the monitoring of a target and the interception communications paths for delivery.

2) Monitoring:

The monitoring of target activity and its delivery.

3) Cleardown:

The removal of a monitor facility against a target and the cleardown of the interception communications paths.

The present document does not describe the means of transporting data from the TETRA network to the LEA, but describes only the means of capturing and encoding the activities of a target within the TETRA network and delivering this data to the mediation function.

The present document does not define the operations or technical requirements of the Handover Interface that takes data from the mediation function to the Law Enforcement Monitoring Facility (LEMF).

The present document does not define the operations or technical requirements of the LEMF.

NOTE 2: The present document presupposes some familiarity with the operation of TETRA systems and of lawful interception.

NOTE 3: The present document suggests a barrier to external manipulation of the TETRA infrastructure by means of a mediation function.

---

## 2 References

The following documents contain provisions which, through reference in this text, constitute provisions of the present document.

- References are either specific (identified by date of publication and/or edition number or version number) or non-specific.
- For a specific reference, subsequent revisions do not apply.
- For a non-specific reference, the latest version applies.

Referenced documents which are not found to be publicly available in the expected location might be found at <http://docbox.etsi.org/Reference>.

- [1] European Union Council Resolution COM 96/C329/01 of 17 January 1995 on the Lawful Interception of Telecommunications.
- [2] ETSI TS 101 331: "Telecommunications security; Lawful Interception (LI); Requirements of Law Enforcement Agencies".
- [3] ETSI EN 300 392-1: "Terrestrial Trunked Radio (TETRA); Voice plus Data (V+D); Part 1: General network design".
- [4] ETSI EN 300 392-2: "Terrestrial Trunked Radio (TETRA); Voice plus Data (V+D); Part 2: Air Interface (AI)".
- [5] ETSI EN 300 392-7: "Terrestrial Trunked Radio (TETRA); Voice plus Data (V+D); Part 7: Security".
- [6] ISO/IEC 8348: "Information technology - Open Systems Interconnection - Network service definition".

- [7] ISO/IEC 8878 (1992): "Information technology - Telecommunications and information exchange between systems - Use of X.25 to provide the OSI Connection-mode Network Service".
- [8] ETSI ES 201 671: "Telecommunications security; Lawful Interception (LI); Handover interface for the lawful interception of telecommunications traffic".
- [9] ETSI ES 201 158: "Telecommunications security; Lawful Interception (LI); Requirements for network functions".
- [10] ETSI TS 101 671: "Lawful Interception (LI); Handover interface for the lawful interception of telecommunications traffic".
- [11] ETSI TS 102 232: "Lawful Interception (LI); Handover specification for IP delivery".
- [12] ITU-T Recommendation X.680: "Information technology - Abstract Syntax Notation One (ASN.1): Specification of basic notation".
- [13] ITU-T Recommendation X.690: "Information technology - ASN.1 encoding rules: Specification of Basic Encoding Rules (BER), Canonical Encoding Rules (CER) and Distinguished Encoding Rules (DER)".
- [14] ITU-R Recommendation TF-460-6: "Standard-frequency and time-signal emissions".

---

## 3 Definitions and abbreviations

### 3.1 Definitions

For the purposes of the present document, the following terms and definitions apply:

**call:** any connection (fixed or temporary) capable of transferring information between two or more users of a telecommunication system where at least one of the parties to the call (for the purposes of EN 301 040) is a user of a TETRA system

**content of communication:** information exchanged between two or more users of a telecommunications service where at least one of the users is accessing the service in a TETRA network whilst a call is established, excluding intercept related information

NOTE 1: This includes information which may, as part of some TETRA service, be stored by one user for subsequent retrieval by another.

NOTE 2: The user in the above definition may be any addressable entity in the TETRA domain using either a TSI [3] or some other valid network address (undefined).

**Coordinated Universal Time (UTC):** time scale maintained by the Bureau International de l'Heure (BIH) that forms the basis of a coordinated dissemination of standard frequencies and time signals

NOTE: The source of this definition is ITU-R Recommendation TF-460-6 [14] of the Consultative Committee on International Radio (CCIR). CCIR has also defined the acronym for Coordinated Universal Time as UTC.

**co-target:** correspondent of the target (i.e. the individual or group address with whom the target is communicating)

**identity:** technical label which may represent the origin or destination of any TETRA traffic, as a rule clearly identified by a physical communication identity number (such as a telephone number) or the logical or virtual communication identity number (such as a personal number) which the subscriber can assign to a physical access on a case-by-case basis

**intercept related information:** collection of information or data associated with TETRA services involving the target, specifically call associated information or data, service associated information or data (e.g. service profile management by subscriber) and location information



**Interception (OR Lawful Interception):** action (based on the law), performed by a network operator/service provider, of making available certain information and providing that information to an LEMF

NOTE: In the present document the term interception is not used to describe the action of observing communications by an LEA.

**interception interface:** physical and logical locations within the network operator's/service provider's TETRA facilities where access to the content of communication and intercept related information is provided

NOTE: The interception interface is not necessarily a single, fixed point.

**interception measure:** technical measure which facilitates the interception of TETRA traffic pursuant to the relevant national laws and regulations

**interception subject:** person or persons, specified in a lawful authorization, whose communications are to be intercepted

**Law Enforcement Agency (LEA):** organization authorized by a lawful authorization based on a national law to receive the results of communication interceptions

**Law Enforcement Monitoring Facility (LEMF):** law enforcement facility designated as the transmission destination for the results of interception relating to a particular interception subject

**lawful authorization:** permission granted to an LEA under certain conditions to intercept specified communication and requiring co-operation from a network operator/service provider

NOTE: Typically this refers to a warrant or order issued by a lawfully authorized body.

**LI interface:** physical and logical interface across which the results of interception are delivered from a network operator/service provider to a LEMF

NOTE: In TS 101 331 [2] this interface is termed the handover interface. The term handover is used in TETRA systems to describe the maintenance of a call when the mobile party moves between cells.

**location information:** information relating to the geographic, physical or logical location of an identity relating to an interception subject

**mediation function:** function that lies between the LEA and the TETRA SwMI that translates data from the SwMI for use by the collection function of the LEA

NOTE: The mediation function may be resident in the TETRA SwMI and is specified by the protocols and data on the interface to the TETRA SwMI (as defined in the present document) and to the collection function (as defined by the LEA).

**multi-user gateway:** reserved address given to a gateway port that is used only for intermediate call support, e.g. ISDN gateway

**Private Mobile Radio (PMR):** radio system designed for a closed user group

**Public Access Mobile Radio (PAMR):** radio system available to members of the general public generally by subscription. The owner and operator are unlikely to be the same as the user

**Public Network Operator (PNO):** operator of a public infrastructure which permits the conveyance of signals between defined network termination points by wire, by microwave, by optical means or by other electromagnetic means

**Quality of Service (QoS):** quality specification of a TETRA channel, system, virtual channel, computer-TETRA session, etc

NOTE: Quality of service may be measured, for example, in terms of signal-to-noise ratio, bit error rate, message throughput rate or call blocking probability.

**reliability:** probability that a system or service will perform in a satisfactory manner for a given period of time when used under specific operating conditions

**result of interception:** information relating to a target service, including the content of communication and intercept related information, which is passed by a network operator or service provider to an LEA

NOTE: Intercept related information may be provided whether or not call activity is taking place.

**served user:** user receiving the intercepted traffic

**service provider:** natural or legal person providing one or more public communication services whose provision consists wholly or partly in the transmission and routing of signals on a network

NOTE 1: A service provider need not necessarily run his own network.

NOTE 2: To avoid confusion the term TETRA service provider may be used to distinguish the operator of a TETRA system from the service provider in traditional public networks.

**target:** identity associated with a target service (see below) used by the interception subject

**Target Group TETRA Subscriber Identity (GTSI):** identity associated with a target service (see below) used by the interception subject where the interception subject is a group

**target service:** communication service associated with an interception subject and usually specified in a lawful authorization for interception

NOTE: There may be more than one target service associated with a single interception subject.

**Target Terminal Equipment Identity (TEI):** identity associated with a target service (see above) used by the interception subject where the interception target is an equipment

**telecommunication:** any transfer of signs, signals, writing, images, sounds, data or intelligence of any nature transmitted in whole or in part by a wire, radio, electromagnetic, photo-electronic or photo-optical system

## 3.2 Abbreviations

For the purposes of the present document, the following abbreviations apply:

AI	Air Interface
ASSI	Assigned Short Subscriber Identity
BER	Basic Encoding Rules
BIH	Bureau International de l'Heure
CCIR	Consultative Committee on International Radio
CCK	Common Cipher Key
CGI	Cell Global Identification
CONS	Connection Oriented Network Service
DMO	Direct Mode Operation
DSS1	Digital subscriber Signalling System No. one
GCK	Group Cipher Key
GTSI	Group TETRA Subscriber Identity
IP	Internet Protocol
ISDN	Integrated Services Digital Network
ITSI	Individual TETRA Subscriber Identity
LA	Location Area
LEA	Law Enforcement Agency
LEMF	Law Enforcement Monitoring Facility
LI	Lawful Interception
LII	Lawful Interception Interface
LS	Line Station
MF	Mediation Function
MM	Mobility Management
MNI	Mobile Network Identity
MS	Mobile Station
PAMR	Public Access Mobile Radio
PISN	Public Integrated Services Network
PMR	Private Mobile Radio

PNO	Public Network Operator
PSTN	Public Switched Telephone Network
QoS	Quality of Service
RPDI	Radio Packet Data Infrastructure
SCK	Static Cipher Key
SCLNS	Specific ConnectionLess Network Service
SDL	Service and Description Language
SDS	Short Data Service
SS	Supplementary Service
SSI	Short Subscriber Identity
SwMI	Switching and Management Infrastructure
TEI	TETRA Equipment Identity
TETRA	TErrestrial Trunked RAdio
TSI	TETRA Subscriber Identity
UTC	Coordinated Universal Time
VC	Virtual Circuit

---

## 4 User (LEA) requirements - the administrative interface

This clause presents the user requirements derived from COM 96/C329/01 [1] and TS 101 331 [2] and specifically related to the lawful interception of targets where the target is using a TETRA network (SwMI or RPDI) for communication.

The network operator/service provider shall use best endeavours at all times to comply with the requirements of the LEA. The specific information to be made available shall be made clear by the LEA.

### 4.1 Non-disclosure

The network operator/service provider and the LEA should jointly agree confidentiality on the manner in which interception measures are implemented in a given TETRA installation with the manufacturers of the technical installations for the implementation of interception measures.

Information relating to target identities and target services to which interception is being applied at any time in the life of the TETRA installation and as defined thereafter by the LEA should not be made available to unauthorized persons.

### 4.2 Identification of the identity to be intercepted

The target may be any valid TETRA Subscriber Address (TSI). If the TSI is used for group communication it shall be referred to as a Group TSI (GTSI), if used for an individual it shall be referred to as an Individual TSI (ITSI). The address space of TETRA is "flat" so there is no reserved address space for either GTSIs or ITSIs. A multi-user gateway should not be allowed to be a target.

If the target is an individual (ITSI) it is possible that the target may belong to one or more groups. Groups of which the target is a member shall be identified as those groups to which the target's ITSI has made a group attachment. The attachment that identifies these groups may be requested by the MS with the target's ITSI, enforced by the SwMI or a permanent attachment; and provision shall be made for interception of communications within groups to which the target's ITSI is attached by any of these means. The group communications should cease being intercepted after such time that the SwMI deems the MS to no longer be attached to the group, e.g. by specific detachment, de-registration, etc.

In some instances network addresses (TSIs) may be provided in blocks to user groups (e.g. to fleet operators). The network operator/service provider shall make every effort to identify an unique target identity based upon data present in the original warrant. If the network operator/service provider is unable to map an unique address to the characteristics of the target defined in the interception warrant the LI interface shall not be invoked.

In some instances the target may be a particular equipment identified by its Terminal Equipment Identity (TEI). The network operator/service provider shall use best endeavours to identify a target TSI. This may require the network operator/service provider to invoke the Mobility Management (MM) service and to use the TEI PROVIDE protocol exchange to identify the ITSI using the target equipment. The present document does not impose a mandate for the support in TETRA systems of this protocol. The use of such a service should not break the rules of service transparency given in clause 4.6.

## 4.3 Result of interception

### 4.3.1 Network validity of result of interception

A network operator/service provider shall only provide a result of interception for targets operating in their network irrespective of the target belonging to that network. If an interception target migrates to a second TETRA network there shall be no requirement for the home network operator/service provider to provide a result of interception from the visited network.

### 4.3.2 Identification of result of interception

The result of interception provided at the LEMF side of the LI interface shall be given a unique identification that shall allow identification of the LEA, the target, network operator/service provider and the warrant reference.

The internal interface shall in addition provide a unique identification to correlate the data to be submitted to the LEMF with the internal interception provision.

### 4.3.3 Format of result of interception

The network operator/service provider shall, prior to delivery of the result of interception:

- 1) remove any air interface encryption, scrambling and channel coding;
- 2) remove any encryption of encrypted material for applications where relevant keys and algorithms are available.

The content of real time communication shall be provided as a verbatim bit stream. In particular no speech transcoding shall be applied (in the TETRA SwMI), and where appropriate TETRA encoded speech shall be provided to the MF.

### 4.3.4 Content of result of interception

The result of interception shall contain:

- the content of all calls originated by the target;
- the content of all calls addressed to the target;
- the content of multi-party calls in which to the best knowledge of the network operator/service provider the target is participating;
- the content of broadcast calls to a user population of which to the best knowledge of the network operator/service provider the target is a member.

In addition the result of interception shall contain:

- 1) the identities that have attempted communication with the target, successful or not;
- 2) the identities that the target has attempted communication with, successful or not;
- 3) identities used by or associated with the target;
- 4) details of services used and their associated parameters;
- 5) those signals emitted by the target invoking additional or modified services;

- 6) time-stamps for identifying the beginning, end and duration of the connection;
- 7) actual destination and intermediate directory numbers if call has been diverted;
- 8) location information;
- 9) advice of charge for provision of result of interception.

The result of interception shall apply to all call types if, and as long as, to the best knowledge of the network operator/service provider, the target is a participant.

For group calls, the GTSI shall be identified as being used by the ITSI where to the best knowledge of the network operator/service provider the target is a participant in the group. This may be achieved by recording the ATTACH/DETACH GROUP IDENTITY messages that dynamically associate an ITSI to a GTSI, or by defining an ITSI as always attached to a group. If a group requires dynamic attachment and the target has not explicitly attached then there is no association of ITSI to GTSI for that group.

NOTE: For further explanation of this topic see EN 300 392-2 [4].

### 4.3.5 Auditing of interception facilities

In order to prevent, and to trace, misuse of the technical functions integrated in the TETRA installation enabling interception, any activation or application of these functions in relation to a given identity shall be fully recorded, including any activation or application caused by faulty or unauthorized input. The records should cover some or all of the following items:

- 1) the identity of target;
- 2) the target service(s) concerned;
- 3) the LEMF to which the result of interception is routed;
- 4) an authenticator suitable to identify the operating personnel (including date and time of input);
- 5) a reference to the lawful authorization.

The network operator/service provider should ensure that the records are tamper-proof and only accessible by authorized individuals in accordance with local laws relating to data privacy.

## 4.4 Location information

A network operator shall provide to the best of their knowledge any location information that may be requested by the LEA and addressed within the initiating warrant. Such data should be within the normal operating parameters of the TETRA network and may take one or more of the following forms:

- 1) the current location area (or base station if available) at which the target is registered;
- 2) the current line identity associated with a registered target;
- 3) the line or service identity to which the target is currently registered and to which calls are redirected.

The location information should be delivered at one or both of the following times:

- 1) with registration;
- 2) with result of interception.

## 4.5 Time constraints

The result of interception shall be made available during the period specified by the interception order.

A network operator shall provide data for new calls from the time commencing no earlier than the time at which the interception request is received.

The instance of the LI interface shall be established as quickly as possible after issue of an interception order. Thereafter the result of interception shall be delivered to the LI interface on a real-time or near real-time basis.

## 4.6 Service transparency

The LI interface shall be implemented and operated with due consideration for the following:

- 1) unauthorized persons should not be able to detect any change from the un-intercepted state;
- 2) communicating parties should not be able to detect any change from the un-intercepted state;
- 3) the perceived operating facilities of any network service should not be altered as a result of any interception measure;
- 4) the perceived quality of service of any network service should not be altered as a result of any interception measure.

## 4.7 LI interface instances

Each instance of the LI interface shall support the transmission of result of interception related to a single target. If an LEA requires a TETRA network to provide multiple result of interceptions to one or more LEMFs these shall be delivered from separate instances of the LI interface. The preceding may be achieved by using separate physical communication channels for each product or by multiplexing many result of interceptions onto a single physical communication channel. The correlation between the content of communication and intercept related information shall be unique.

## 4.8 LI interface events

The LEMF shall be informed by the TETRA network through the LI interface of the following events:

- 1) the activation of an intercept measure;
- 2) the deactivation of the intercept measure;
- 3) any change of the intercept measure;
- 4) the temporary unavailability of the intercept measure.

The LI interface shall be active for the period of the warrant. At the expiry of the warrant the LI interface shall remain active until all result of interception relating to the target has been delivered. Such data may include an advice of charge from the network operator/service provider indicating the sum of resources used in providing the result of interception.

NOTE: HI1 may be used to transfer the data described above.

---

## 5 Description of internal TETRA LI interface

The TETRA LI interface does not describe a communications protocol or interface, rather it defines a means of interpreting data and actions within a TETRA SwMI/RPDI for supply to the mediation function.

The functional and behavioural model is described using SDL and is shown in this clause. The detail data definitions and assignments are given in clause 6.

### 5.1 Stage 1 description of TETRA LI technical interface

#### 5.1.1 Description

The technical implementation of LI interface shall take its operational requirements from clause 4 of this present document.

#### 5.1.2 Procedures

##### 5.1.2.1 Provision/withdrawal

The LI interface service shall always be provided.

##### 5.1.2.2 Normal procedures

###### 5.1.2.2.1 Activation/deactivation/registration

The LI interface shall be activated upon issue of a valid interception warrant from an LEA. The LI interface shall be deactivated when the interception warrant expires or as defined by the LEA.

###### 5.1.2.2.2 Invocation and operation

The LI interface shall be invoked on any communication from or to the target visible in the network.

###### 5.1.2.2.3 Interrogation

Interrogation shall be possible only from an authorized user.

An authorized user for the purposes of interrogation is one who is allowed by both LEA and the network operator/service provider to administer the LI interface.

#### 5.1.3 Interaction with TETRA supplementary services

There shall be no interaction.

NOTE: This means that the invocation of LI shall not alter the operation of TETRA supplementary service.

#### 5.1.4 Interaction with other supplementary services

There shall be no interaction.

NOTE: This means that the invocation of LI shall not alter the operation of any supplementary service.

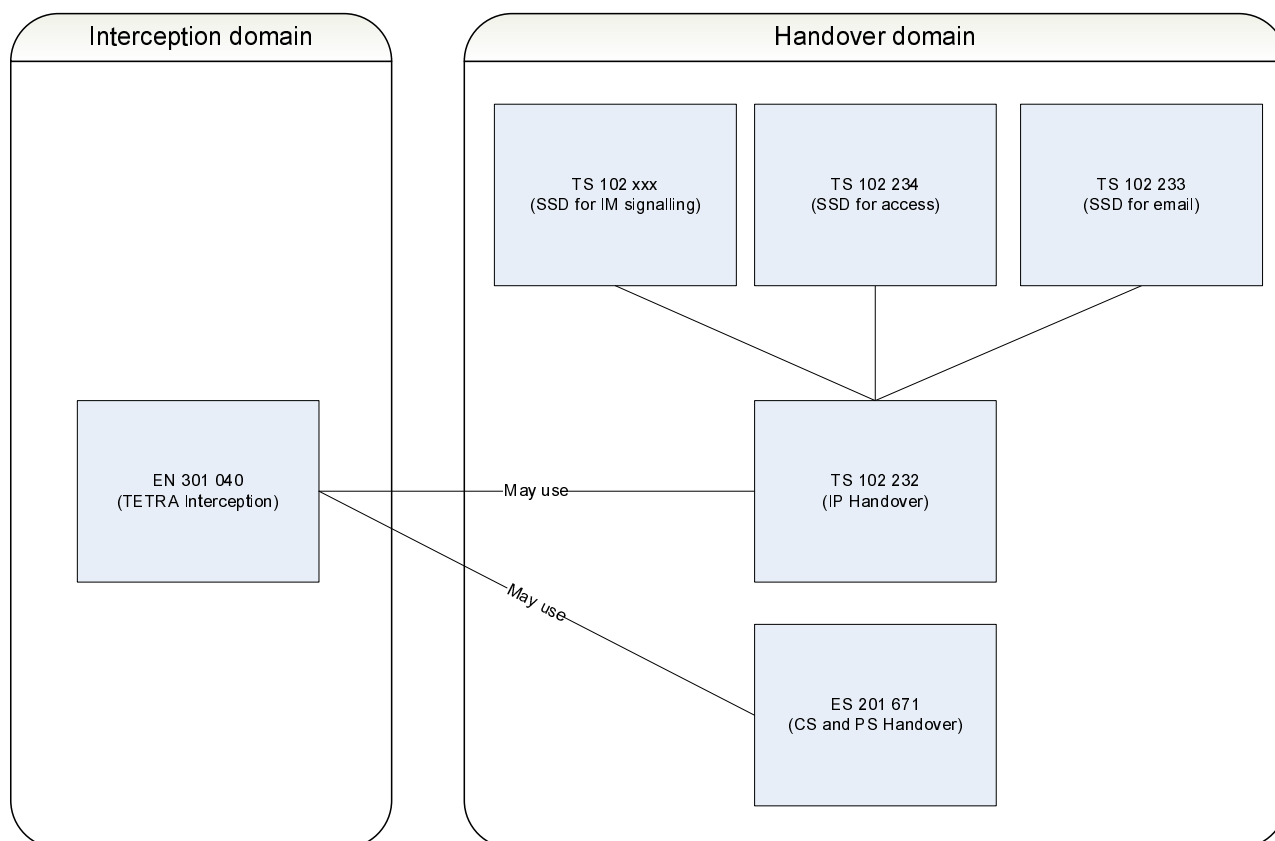
## 5.2 Stage 2 description of TETRA LI technical interface

The stage 2 definition specifies the behaviour of the TETRA LI service from the perspective of the service provider.

NOTE: For details of the operation of the basic and supplementary services of TETRA the reader is referred to the appropriate TETRA specifications.

### 5.2.1 Functional model

The functional model is developed from the reference model provided in clause 4 of the present document.



**Figure 2a: Identification of EN 301 040 (the present document) with respect to other documents in the LI domain**

The present document only considers the roles of the TETRA Infrastructure and the TETRA side of the mediation function.

In order to better describe the behaviour of the internal LI function clause 5.2 describes the sequence of information flows across the internal LI interface.

### 5.2.2 Information flow sequences

This clause is split into 3 parts:

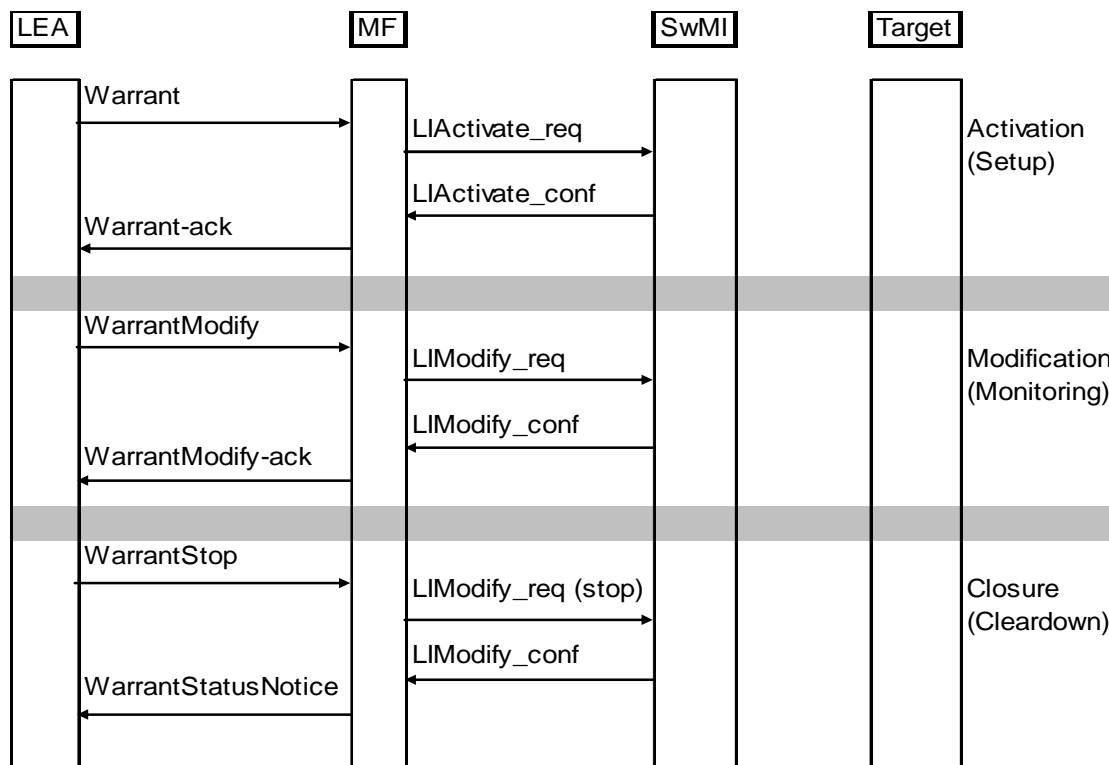
- LEA control is covered in clause 5.2.2.1.
- Interception of signalling flows from or to the target is covered in clause 5.2.2.2.
- Interception of traffic from or to the target is covered in clause 5.2.2.2.



### 5.2.2.1 LEA control interactions and information flows

NOTE: The information flows described in this clause do not infer an implementation method. The related external interface (HI1 from ES 201 671 [8]) may be manual.

Figure 2b shows the stimuli from the LEA and the responses from the SwMI that are translated by the mediation function.



NOTE: The term "warrant" is used to indicate any order to apply interception against a target in a TETRA SwMI.

**Figure 2b: External stimuli and information flow sequences for TETRA LI**

The LI\_ACTIVATE\_req information flow shall contain sufficient data to allow the SwMI to validate the request and to make the required target activity data available to the MF. The returned information flow (LI\_ACTIVATE\_conf) shall contain a unique identifier for the interception applied within the network. Any subsequent information flows (LI\_MODIFY\_req/conf) shall refer to this unique identifier. No protocol timers are defined in the present document for the req/conf exchanges but the requirements stated in clause 4.5 shall apply.

The information flows that initiate or modify the interception are described as ASN.1 data structures as shown in clauses 5.2.2.1.1 through to 5.2.2.1.5. The ASN.1 definitions given below are collated in annex E.

#### 5.2.2.1.1 LI\_ACTIVATE\_req

This information flow is sent from the MF to the SwMI to request redirection of traffic (in T\_TRAFFIC\_ind and CT\_TRAFFIC\_ind information flows) and signalling (in TARGET\_ACTIVITY\_MONITOR\_ind and TARGET\_COMMS\_MONITOR\_ind information flows).

```

LIACTIVATEreq ::= SEQUENCE
{
    timeStamp          UTCTime,
    invokeId           INTEGER,
    targetAddress      AddressType,
    expiryDateTime     UTCTime,
    targetname         VisibleString OPTIONAL,
    additionaltargetdata VisibleString OPTIONAL,
    monitorServiceList SEQUENCE OF ActivityType
}
  
```

Protocol constraints:

Response to = None

Response expected = LI\_ACTIVATE\_conf

#### 5.2.2.1.2 LI\_ACTIVATE\_conf

If the request is successful the Result element of the information flow shall be set to TRUE and the TLIIInstanceid set. The TLIIInstanceid shall thereafter be used as the TETRA specific pointer to the interception. If the request is unsuccessful the Result element shall be set to FALSE and the TLIIInstanceid shall not be returned. (I.e. the presence of the TLIIInstanceid is conditional on the value of Result).

```
LIACTIVATEconf ::= SEQUENCE
{
  timeStamp          UTCTime,
  invokeId           INTEGER,
  result             BOOLEAN,
  tLIInstanceid     TLIIIdType          OPTIONAL  -- Conditional on value of Result --
}
```

Protocol constraints:

Response to = LI\_ACTIVATE\_req

Response expected = None

#### 5.2.2.1.3 LI\_MODIFY\_req

An interception may be modified many times in its life. Each modification is addressed using the reference identity (TLIIInstanceid) and a sequential ModificationNumber. The modification may be one of a selection as shown below.

```
LIMODIFYreq ::= SEQUENCE
{
  tLIInstanceid     TLIIIdType,
  timeStamp          UTCTime,
  modificationNumber INTEGER,
  modificationType  CHOICE
  {
    halt            BOOLEAN,
    reset           BOOLEAN,
    expiryDateTime  UTCTime,
    targetname      VisibleString,
    additionaltargetdata VisibleString,
    monitorServiceList SEQUENCE OF ActivityType
  }
}
```

Protocol constraints:

Response to = None

Response expected = LI\_MODIFY\_conf

#### 5.2.2.1.4 LI\_MODIFY\_conf

If the modification request is successful then Result shall be set to TRUE, else it shall be set to FALSE.

```
LI_MODIFY_conf ::= SEQUENCE
{
  TLIIInstanceid     TLIIIdType,
  Timestamp           UTCTime,
  ModificationNumber  Integer,
  Result             BOOLEAN
};
```

Protocol constraints:

Response to = LI\_MODIFY\_req

Response expected = None

### 5.2.2.1.5 LI\_STATUS\_ind

This information flow from the SwMI to the MF reports changes in the status of the SwMI. This may indicate for example problems in the ability to provide interception.

```
LI_STATUS_ind ::= SEQUENCE
{
    TLIInstanceid          TLIIdType,
    Timestamp              UTCTime,
    TETRA_Sys_Status      StatusType
};
```

Protocol constraints:

Response to = None

Response expected = None

### 5.2.2.2 Target signalling and traffic interactions and information flows

Figure 4 shows an example of the transmission of traffic from the target using a TETRA Air Interface (AI) connection to the SwMI and undertaking a call. The principle captured applies to all target activity such as registration.

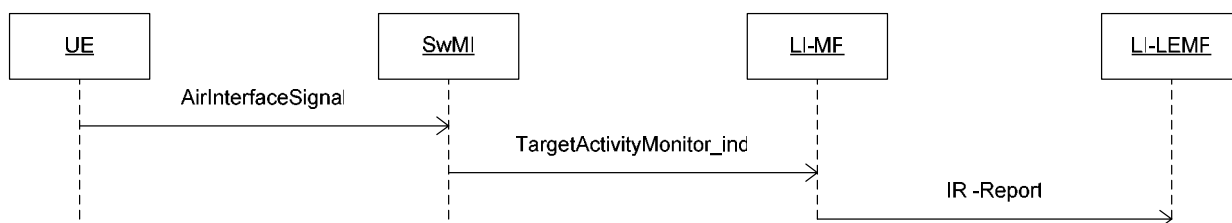


Figure 3: Principle of interception information flow

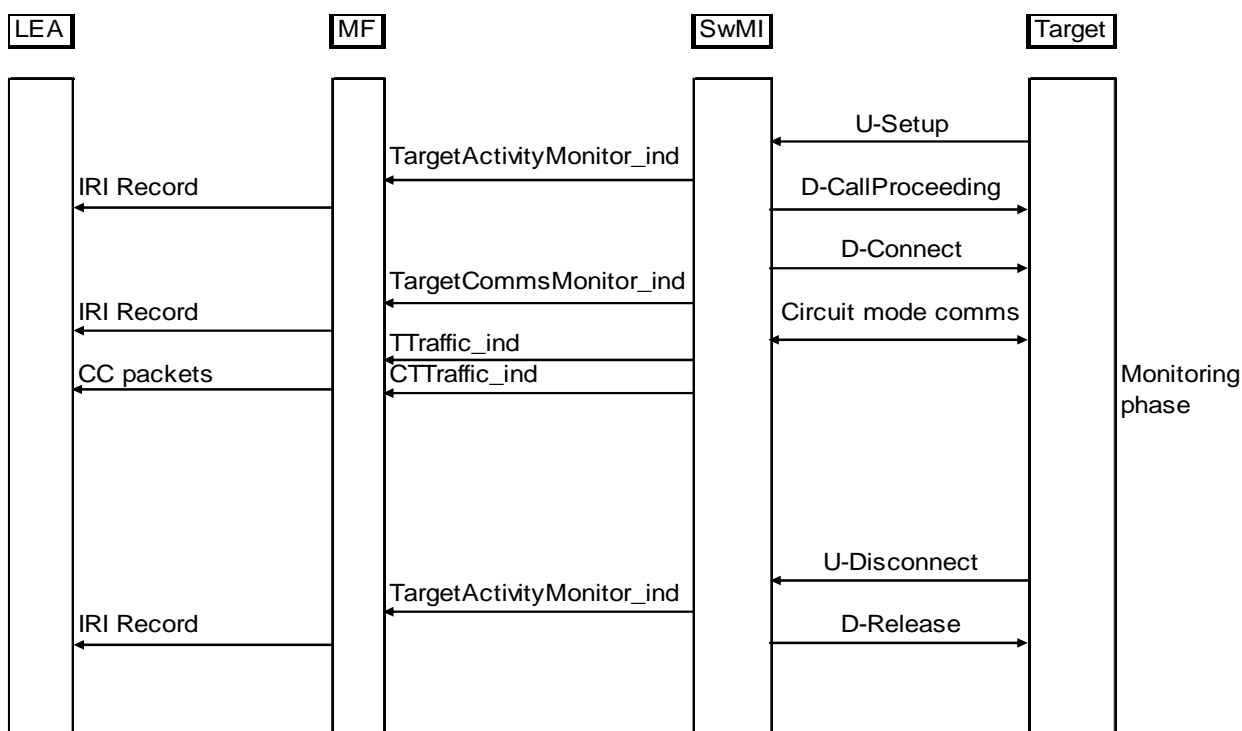


Figure 4: Example information flow sequence for TETRA LI when target makes and clears a call

The information flows that indicate the activity of the target (signalling or traffic) are described as ASN.1 data structures as shown in clauses 5.2.2.2.1 to 5.2.2.2.4.

#### 5.2.2.2.1 TARGET\_ACTIVITY\_MONITOR\_ind

This information flow shall provide in summary form the activity of the target on the SwMI to the MF. It shall have a header section indicating who, when and where, with a body section indicating the what of the target activity.

```
TARGETACTIVITYMONITORind ::= SEQUENCE
{
  tLIInstanceid          TLIIIdType,          -- header, who -
  timestamp              UTCTime,            -- header, when -
  targetLocation         LocationType,       -- header, where -
  targetAction           ActivityType,       -- body, what -
  supplementaryTargetaddress AddressType     OPTIONAL,
  cotargetaddress        SEQUENCE OF AddressType OPTIONAL,
  cotargetlocation       SEQUENCE OF LocationType OPTIONAL,
  tSignallingPacket      BIT STRING         OPTIONAL
}
```

Protocol constraints:

Response to = None

Response expected = None

##### 5.2.2.2.1.1 Relation to Handover

The TARGET\_ACTIVITY\_MONITOR\_ind information flow shall be carried in the body of an IRI-Record type across HI2.

#### 5.2.2.2.2 TARGET\_COMMS\_MONITOR\_ind

This information flow is used to indicate the change of target activity from signalling or packet mode data towards circuit mode activity. It identifies the logical location of the T\_TRAFFIC\_ind and CT\_TRAFFIC\_ind information flows.

```
TARGETCOMMSMONITORind ::= SEQUENCE
{
  tLIInstanceid          TLIIIdType,          -- header, who -
  timestamp              UTCTime,            -- header, when -
  targetLocation         LocationType,       -- header, where -
  supplementaryTargetaddress AddressType     OPTIONAL,
  targetcommsid          CircuitIdType,      -- body, what -
  cotargetaddress        SEQUENCE OF AddressType OPTIONAL,
  cotargetcommsid       SEQUENCE OF CircuitIdType OPTIONAL
}
```

Protocol constraints:

Response to = None

Response expected = None

##### 5.2.2.2.2.1 Relation to Handover

The TARGET\_COMMS\_MONITOR\_ind information flow shall be carried in the body of an IRI-Record type across HI2.

### 5.2.2.2.3 T\_TRAFFIC\_ind

This information flow carries a TETRA AI traffic packet of the target to the MF. This applies to circuit mode traffic only.

```
TTRAFFICind ::= SEQUENCE
{
    tLIInstanceid          TLIIIdType,
    trafficPacket          BIT STRING
}
```

Protocol constraints:

Response to = None

Response expected = None

#### 5.2.2.2.3.1 Relation to Handover

The T\_TRAFFIC\_ind information flow shall be carried in the body of an CC-Record type across HI3.

NOTE: TETRA traffic is intercepted as discrete packets which may be encoded as TETRA speech.

### 5.2.2.2.4 CT\_TRAFFIC\_ind

This information flow carries a TETRA AI traffic packet of the co-target to the MF. This applies to circuit mode traffic only.

```
CTTRAFFICind ::= SEQUENCE
{
    tLIInstanceid          TLIIIdType,
    trafficPacket          BIT STRING
}
```

Protocol constraints:

Response to = None

Response expected = None

#### 5.2.2.2.4.1 Relation to Handover

The CT\_TRAFFIC\_ind information flow shall be carried in the body of an CC-Record type across HI3.

NOTE: TETRA traffic is intercepted as discrete packets which may be encoded as TETRA speech.

## 6 Data provision and encoding

### 6.1 Identification of result of interception (*tLIInstanceid*)

The result of interception provided by the TETRA SwMI shall be given a unique tag that shall allow identification of the LEA, the target, network operator/service provider and the warrant reference. This tag shall be first returned in the LI\_ACTIVATE\_conf information flow and forms part of the subsequent header data in TARGET\_ACTIVITY\_MONITOR\_ind and TARGET\_COMMS\_MONITOR\_ind information flows (the *tLIInstanceid* element), as well as being used in the LI\_MODIFY and LI\_STOP information flows.

TLIIIdType ::= BIT STRING (SIZE (16)) -- 16 bits –

## 6.2 Provision of identities

All identities used by the target or co-target in communication, successful or unsuccessful, shall be identified using the AddressType data element defined below.

```

AddressType ::= SEQUENCE
{
    tSI                TSISType,
    supplementaryAddress SEQUENCE OF TETRAAddressType OPTIONAL
}

TETRAAddressType ::= CHOICE
{
    tETRAaddress      TSISType,
    pISNaddress       NumericString (SIZE (20)),
    iP4address        BIT STRING (SIZE (32)),           -- 32 bits -
    iP6address        BIT STRING (SIZE (128)),         -- 128 bits -
    e164address       NumericString (SIZE (20)),
    tEI               TEISType
}

TSISType ::= SEQUENCE
{
    mcc                MCCType,
    mnc                MNCType,
    ssi                SSISType
}

MCCType ::= BIT STRING (SIZE (10)) -- 10 bits, as defined in EN 300 392-1 -
MNCType ::= BIT STRING (SIZE (14)) -- 14 bits, as defined in EN 300 392-1 -
SSISType ::= BIT STRING (SIZE (24)) -- 24 bits, as defined in EN 300 392-1 -

```

The (co) target may use many identities for communication. All addresses used shall be bound to the (co) target TSI that forms the principal monitoring key.

Examples of supplementary identities to the (I)TSI include:

- Alias Short Subscriber Identity (ASSI) (assigned by the hosting network);
- Group TSI (each ITSI may be associated with several groups);
- IP address (used for IP service);
- PISN address (used for calls to PTSN/ISDN gateways);
- TETRA Equipment Identity (TEI).

If the (co) target is to be identified by means of the TEI the SwMI shall support the TEI\_PROVIDE exchange described in EN 300 392-7 [5], clause 4.

### 6.2.1 Target

The address used by the SwMI in communicating with the target shall be provided in the Supplementary\_Target\_address element of the TARGET\_ACTIVITY\_MONITOR\_ind information flow.

When an ITSI attaches to the group using the ATTACH DETACH GROUP IDENTITY request primitive this group identity shall be indicated in the Supplementary\_Target\_address element of the TARGET\_ACTIVITY\_MONITOR\_ind information flow.

### 6.2.2 Co-target

The identity of co-targets shall be given in the Co\_target\_address information element of the TARGET\_ACTIVITY\_MONITOR\_ind information flow. In instances where several co-targets can be identified the element shall be repeated.

## 6.3 Provision of details of services used and their associated parameters

The activity of the target shall be given in the TargetAction element of the TARGET\_ACTIVITY\_MONITOR\_ind. The TargetAction element shall be of type ActivityType defined below.

```
ActivityType ::= SEQUENCE
{
    cctivity                ActivityClassType,
    callRelation            ENUMERATED
    {
        begin,
        end,
        continue,
        report
    },
    direction                ENUMERATED
    {
        toTarget,
        fromTarget
    } OPTIONAL,
    scope                    ENUMERATED
    {
        point2Point,
        point2MultiPoint,
        broadcast
    } OPTIONAL,
    cPlaneData              BIT STRING OPTIONAL,
    sStype                   SStype OPTIONAL
}
```

### 6.3.1 Circuit mode services (U-plane)

For circuit mode services the TARGET\_ACTIVITY\_MONITOR\_ind information flow shall indicate the direction of the call (to - or from - target). It shall also indicate whether the call is initiated as point-to-point or as point-to-multipoint.

The ActivityType!Activity element shall be set to one of:

```
tETRASpeech
singleSlotData24
singleSlotData48
singleSlotData72
multiSlotData224
multiSlotData248
multiSlotData272
multiSlotData324
multiSlotData348
multiSlotData372
multiSlotData424
multiSlotData448
multiSlotData472
```

The sub-elements Direction and Scope shall be provided.

### 6.3.2 Data services (C-plane)

#### 6.3.2.1 Short data (unacknowledged)

The short data services come in a number of variants. In the encoded variants the translation of message identity to textual message may not be known to the SwMI.

The ActivityType!Activity element shall be set to one of:

```
sDSType1
sDSType2
sDSType3
sDSType4
status
```

The ActivityType!Scope and ActivityType!Direction elements shall be set accordingly. Finally the ActivityType!Data element shall contain the user defined data.

NOTE: The SDS message may be sent to the MF both on entry to the store and on retrieval from the store.

### 6.3.2.2 Short data (acknowledged)

NOTE 1: The acknowledged SDS service is described in EN 300 392-2 [4].

The short data services come in a number of variants. In the encoded variants the translation of message identity to textual message may not be known to the SwMI.

The ActivityType!Activity element shall be set to one of:

```
sDSACKType1
sDSACKType2
sDSACKType3
sDSACKType4
statusack
sDSAcknowledgementsuccess
sDSAcknowledgementfail
```

The ActivityType!Scope and ActivityType!Direction elements shall be set accordingly. The ActivityType!Data element shall contain the user defined data.

NOTE 2: The SwMI may store and forward SDS messages so there may be a significant delay between transmission of an SDS\_ACK\_ event and the receipt of the paired SDS\_Acknowledgement\_ event.

NOTE 3: The SDS message may be sent to the MF both on entry to the store and on retrieval from the store.

### 6.3.2.3 Specific Connectionless Network Service (SCLNS)

The SwMI in general will not be able to identify the source and destination applications for packet mode data services. The connectionless packet mode data service shall be indicated as below.

The ActivityType!Activity element shall be set to:

```
SCLNS_PacketData
```

The ActivityType!Scope and ActivityType!Direction elements shall be set accordingly. The ActivityType!Data element shall contain the user defined data.

### 6.3.2.4 Connection Oriented Network Service (CONS)

The CONS service defined in TETRA is a delta to ISO/IEC 8348 [6] and ISO/IEC 8878 [7]. The ActivityType!Activity element shall be set to:

```
CONS_PacketData
```

The ActivityType!Scope and ActivityType!Direction elements shall be set accordingly.

The ActivityType!Data element shall contain the user defined data and may be further decoded within the MF to identify Virtual Circuit (VC) establishment activities.

### 6.3.2.5 Internet Protocol

The IP address used by the target shall be provided in the TargetAddress!SupplementaryAddress element of the TARGET\_ACTIVITY\_MONITOR\_ind data structure. Similarly the IP address of the correspondent shall be provided in the co-target address element.

The ActivityType!Activity element shall be set to:

```
InternetProtocol
```



The ActivityType!Scope and ActivityType!Direction elements shall be set accordingly. Finally the ActivityType!Data element shall contain the full IP Packet (IP header plus data).

## 6.4 Provision of those signals emitted by the target invoking additional or modified services

Signals that modify or invoke non-call related services shall be given in the same form as for services described in clause 6.3 using the TargetAction element of the TARGET\_ACTIVITY\_MONITOR\_ind data structure.

### 6.4.1 Authentication

Authentication may be invoked at registration or periodically by either the MS or by the SwMI.

NOTE: Mutual authentication is considered as two separate authentications.

The ActivityType!Activity element shall be set to one of:

SwMI\_authentication\_success

SwMI\_authentication\_fail

ITSI\_authentication\_success

ITSI\_authentication\_fail

### 6.4.2 OTAR

Cipher keys of type GCK (Group Cipher Key), CCK (Common Cipher Key), and SCK (Static Cipher Key) may be renewed (refreshed) by the SwMI.

The ActivityType!Activity element shall be set to one of:

OTAR\_SCK\_success

OTAR\_SCK\_fail

OTAR\_GCK\_success

OTAR\_GCK\_fail

OTAR\_CCK\_success

OTAR\_CCK\_fail

### 6.4.3 Enable/Disable

The SwMI may elect to disable a subscription or an equipment during a session. Such an action by the SwMI shall be indicated by setting TargetAction element of the TARGET\_ACTIVITY\_MONITOR\_ind to one of the following:

TARGET\_SUSSCRIPTION\_DISABLED\_T

TARGET\_EQUIPMENT\_DISABLED\_T

TARGET\_SUSSCRIPTION\_DISABLED\_P

TARGET\_EQUIPEMENT\_DISABLED\_P

TARGET\_SUBSCRIPTION\_ENABLED

TARGET\_EQUIPMENT\_ENABLED

NOTE: The \_T or \_P suffix indicates temporary or permanent disable.

## 6.4.4 Registration

For a session based system such as TETRA registration is the means by which a target indicates to the system the ability to make and receive calls. Indication of registration is given by setting TargetAction element of the TARGET\_ACTIVITY\_MONITOR\_ind to one of:

Session\_registration

Session\_deregistration

## 6.4.5 Migration

This is the act of moving from one SwMI to another. This uses a variant of the registration procedure.

Indication of migration is given by setting TargetAction element of the TARGET\_ACTIVITY\_MONITOR\_ind to MIGRATION. The new location is given in the header field. As a result of a successful migration the target is de-registered from the previous system and its registration moved to the new system. This may result in several related information flows.

## 6.4.6 Roaming

This is the act of moving within a SwMI from one Location Area (or serving cell) to another. This uses a variant of the registration procedure.

Indication of roaming is given by setting TargetAction element of the TARGET\_ACTIVITY\_MONITOR\_ind to ROAMING. The new location is given in the header field.

## 6.4.7 Supplementary services

The TETRA system supports a number of supplementary services. The following encoding of the TargetAction element of the TARGET\_ACTIVITY\_MONITOR\_ind information flow shall be applied.

Activity = SupplementaryService

Direction shall be set as appropriate

Scope shall not be set

Data shall not be set

SS\_type shall be set as appropriate

## 6.5 Provision of time-stamps for identifying the beginning, end and duration of the connection

The header of TARGET\_ACTIVITY\_MONITOR\_ind information flow shall contain a mandatory timestamp information element. This element shall be of the type defined below:

UTCTime.

NOTE 1: UTCTime is derived from the Coordinated Universal Time system (see clause 3.1).

NOTE 2: In EN 300 392-2 [4], table 254, it is stated that the network time element is zeroed at 00:00 hours on the first of January every year.

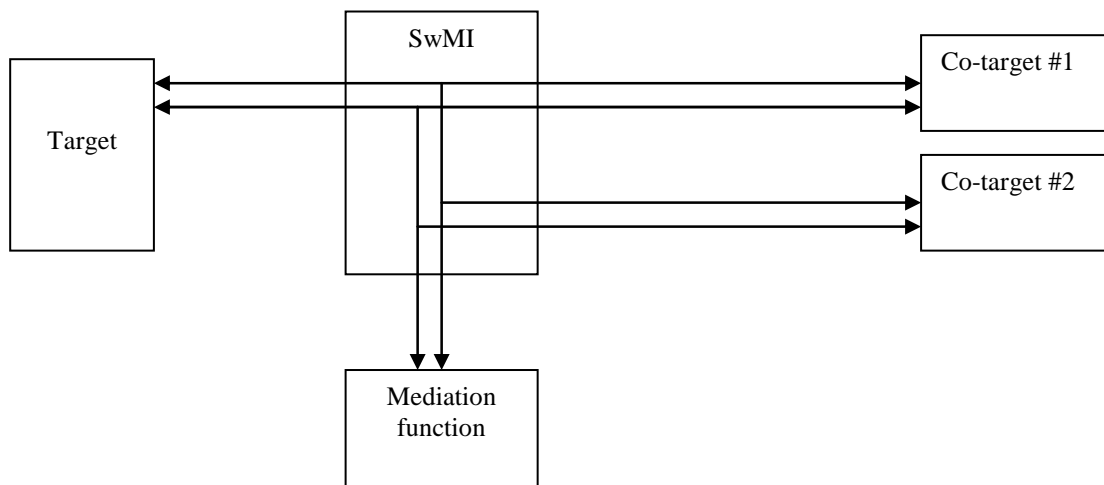
NOTE 3: In EN 300 392-2 [4], table 254, it is stated that the network time element is incremented every 2 s.

## 6.6 Provision of actual destination and intermediate directory numbers if call has been diverted

The address used by the SwMI in communicating with the target shall be provided in the target-address element of the TARGET\_ACTIVITY\_MONITOR\_ind information flow. This shall be differentiated from the target which is to be found by the correlation given in the TLInstanceId element of this information flow.

## 6.7 Provision of the U-plane content of the communication from and to the target

The communication from the target shall be provided in its native TETRA format to the mediation function. The communication shall be provided on separate links to the mediation function (one each for target and co-target communications).



**Figure 5: Separate delivery for the interception of target and co-target content**

## 6.8 Provision of location information

Location information relating to the target should be provided in the header of every TARGET\_ACTIVITY\_MONITOR\_ind information flow. The header element shall specify whether the data provided relates to a mobile TETRA user (MS), or a fixed TETRA user (LS).

The location data shall be provided using the following data construct:

```

LocationType ::= CHOICE
{
  MS_Loc      TETRA_CGIDType,
  LS_Loc      TETRA_LS_AddressType
}
  
```

### 6.8.1 Mobile users of TETRA

The SwMI shall indicate the location of mobile TETRA users using the TETRA Cell Global Identification (CGI) defined below.

```

TETRACGIDType ::= SEQUENCE
{
  mcc      MCCType,
  mnc      MNCType,
  lai      LocationAreaType,
  cI       CellIdType OPTIONAL
}
  
```

Where:

```
CellIdType ::= BIT STRING (SIZE (16))           -- 16 bits -  
LocationAreaType ::= BIT STRING (SIZE (14))    -- 14 bits, as defined in EN 300 392-2 -  
MCCType ::= BIT STRING (SIZE (10))            -- 10 bits, as defined in EN 300 392-1 -  
MNCType ::= BIT STRING (SIZE (14))            -- 14 bits, as defined in EN 300 392-1 -
```

On initialization of the interception facility part of this structure can be populated with system default values (for mnc and mcc particularly).

The SwMI network management should, in addition, provide an up to date translation of TETRA\_CGI to national map co-ordinates. The method of provision is outside the scope of the present document.

## 6.8.2 Fixed line users of TETRA

Fixed line users shall be identified by the PISN (Private Integrated Services Network) number allocated to their access port to the SwMI.

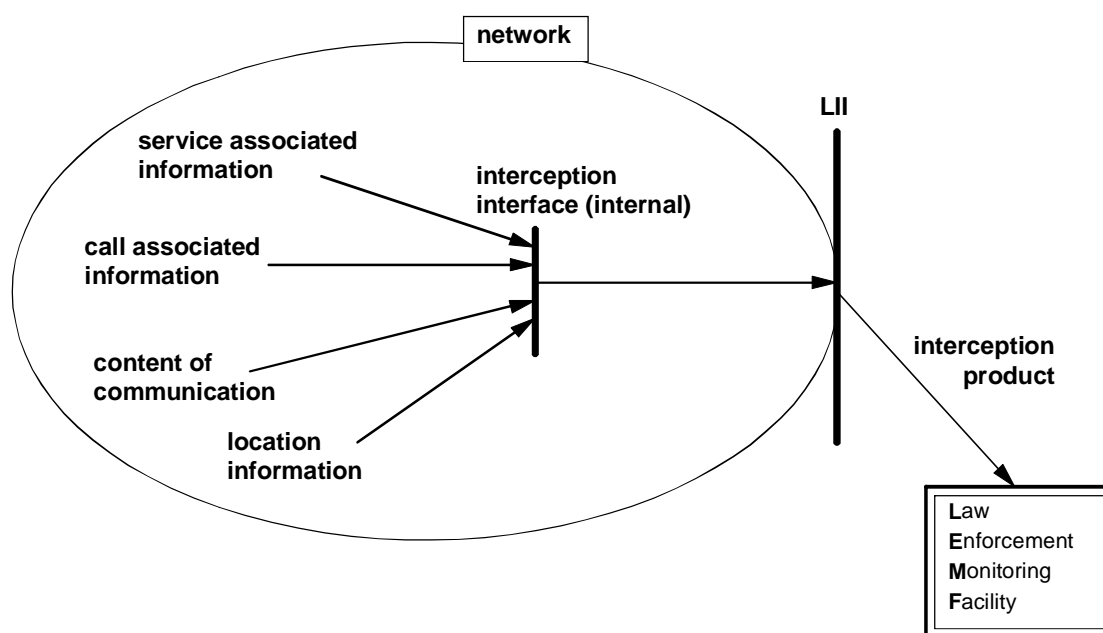
NOTE: In normal TETRA operation a TETRA LS is addressed by its TSI (normally ITSI), which may in some implementations be mapped to an ISDN or PSTN line connection. If the latter is true then the this address is given in the target-address element of the TARGET\_ACTIVITY\_MONITOR\_ind information flow.

## Annex A (informative): Explanatory diagrams

These diagrams are intended to be illustrative of the abstractions employed, and are not intended to limit the scope of the present document.

### A.1 General network arrangements

The general arrangement for a network which is capable of providing interception facilities is as showing figure A.1.



**Figure A.1: General network arrangements for interception**

Information relating to some target service is collected within the network at an interception interface. This information is then passed to an optional buffer, depending on specific circumstances, and then to a LI interface. From the LI interface information is then passed to the LEMF.

The information collected includes some or all of:

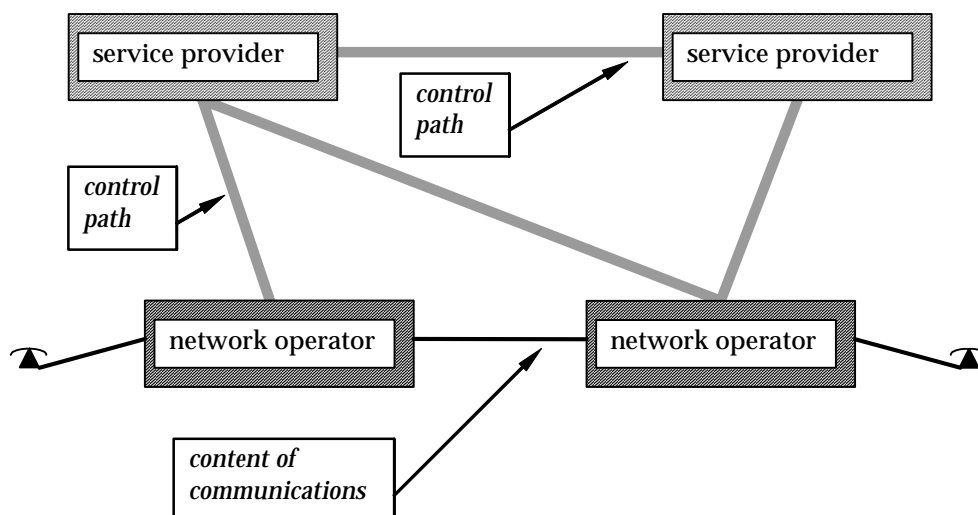
- the content of communication;
- call associated data;
- service associated data;
- location information.

## A.2 Service providers

A service provider is an entity which takes advantage of the connectivity offered by a network provider to offer some service which the network's connectivity on its own is otherwise incapable of providing. Depending on circumstance, a service provider may be part of the same organization which operates a network or the service provider may belong to a different organization. The service provider relies on the co-operation of the network operator to deliver their service to their customer. The service provider may also provide some services with the assistance of other service providers.

The services which a service provider may offer are essentially unlimited. Possibilities include:

- voice storage services;
- personal numbers;
- card calling services;
- short data message services;
- data applications;
- dispatching services.

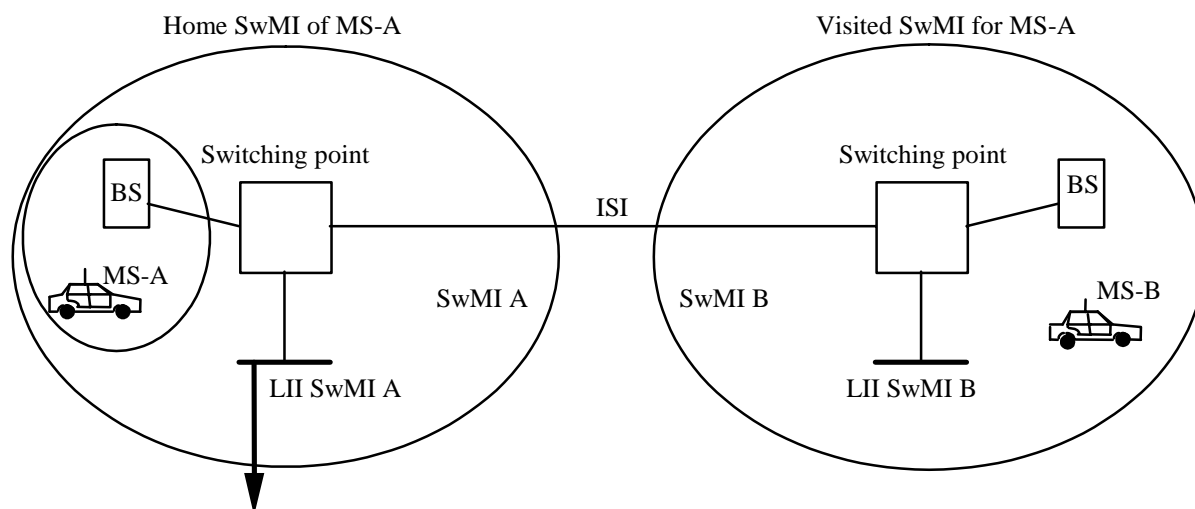


**Figure A.2: Service provider relationship to a network operator**

Figure A.2 shows that, in general, a service provider has no direct access to the content of communications.

## A.3 Service across multiple SwMIs

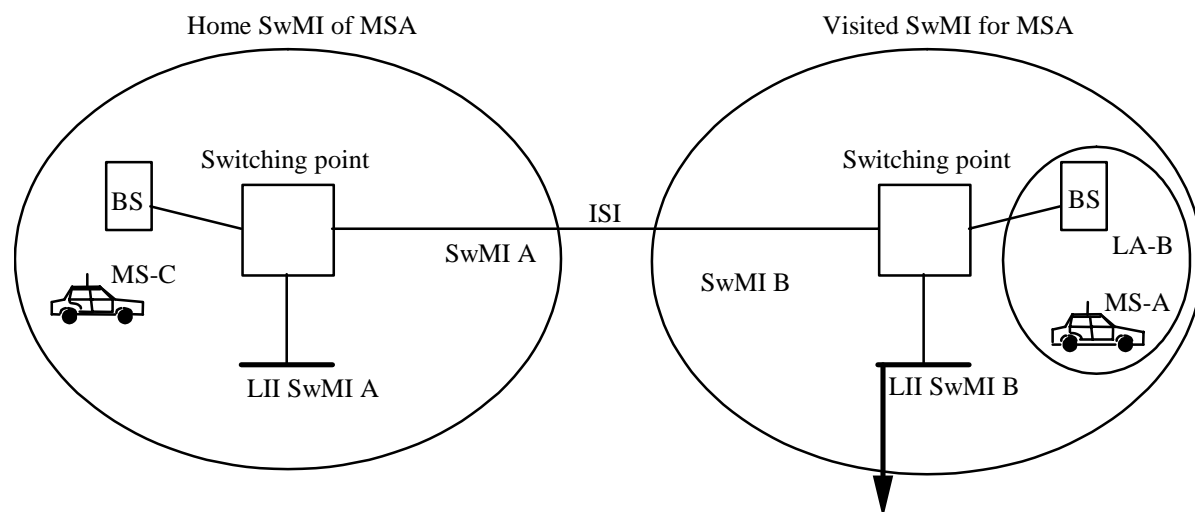
Figure A.3 illustrates interception of communication with a Mobile Station (MS) which is registered on its home SwMI.



**Figure A.3: Service interception with call between 2 SwMIs, target in home SwMI**

If the interception target is MS A, the handover interface of SwMI A can provide information on Location Area (LA) A; and that communication is with MS B located in SwMI B; but does not know the LA for MS B. Handover interface of SwMI B is not able to provide interception information as interception target MS A is not registered on SwMI B.

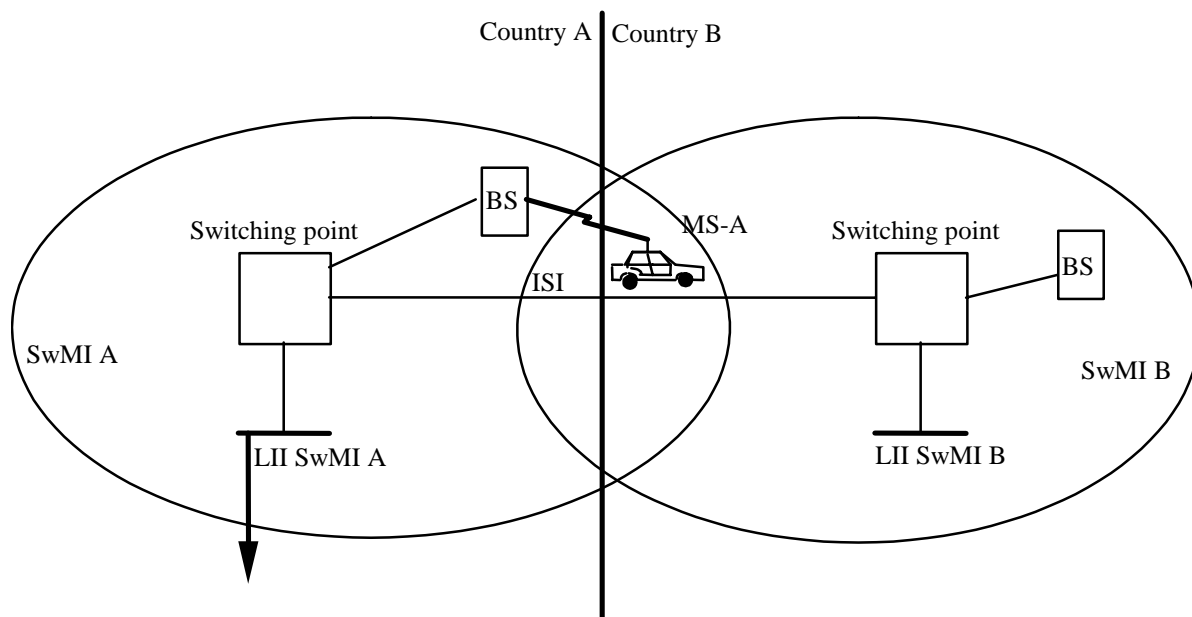
Figure A.4 illustrates the alternative case, when an MS is registered on a SwMI that is not his home SwMI.



**Figure A.4: Service interception with call between 2 SwMIs, target in vSwMI**

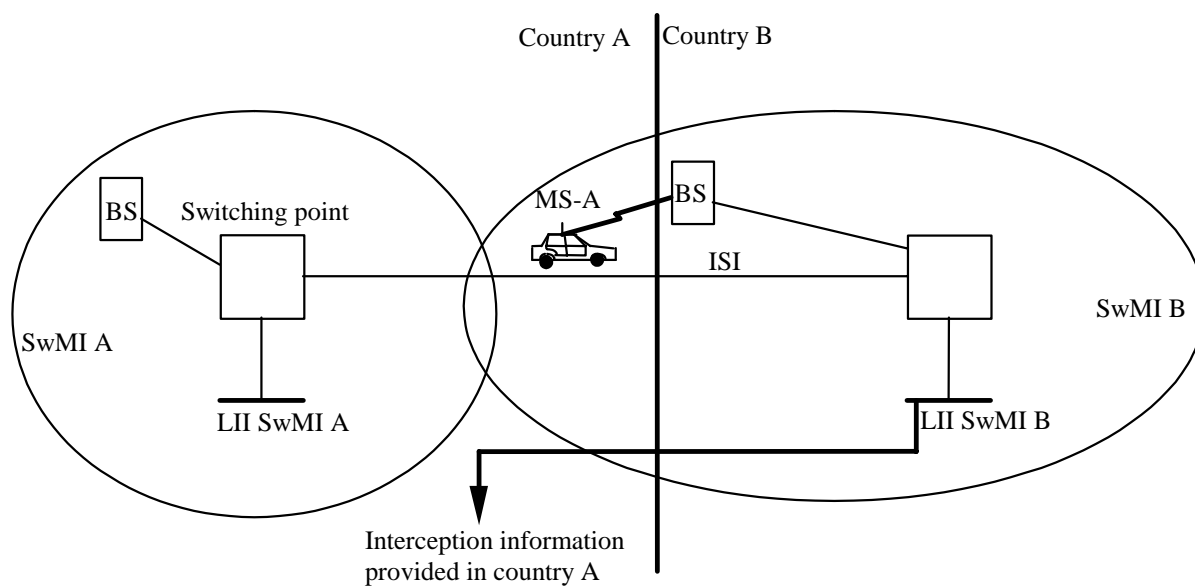
If the interception target is MS A, now roamed to visited SwMI B, the handover interface of SwMI A can no longer provide information as the MS is out of his home SwMI. The handover interface of SwMI B can provide information on MS A, including the LA B details. If the MS is in communication with MS C, located on MS As home SwMI, only the interface of SwMI B can provide information concerning MS C, as information can only be associated with the target for interception, MS A.

## A.4 Service across international borders



**Figure A.5: Service interception in a single SwMI with target on foreign territory**

If the interception target MS A is operating from within the borders of country B, but is registered on SwMI A and making use of cross-border coverage, all interception information shall be present at the handover interface of SwMI A, not that of SwMI B.



**Figure A.6: Service interception in a single SwMI with target and LEMF on foreign territory**

If a service provider uses a SwMI based in a foreign country, country B, to provide service across a border into the home country, country A, for geographical coverage or other reasons, he may be required to provide lawful interception information within country A. This shall be achieved by extending the handover interface of the foreign SwMI, SwMI B, into country A.



---

Annex B (informative):  
Void

---

## Annex C (informative): Example encoding of target behaviour

Annex C gives examples of how typical target behaviour is encoded by the LI mechanisms described in the main text.

---

### C.1 Call setup from target to TETRA co-target

For a TETRA user (target) making a call attempt to another TETRA user the call setup message (U-SETUP) may take the following form:

```
U-SETUP ::=
PDU-Type = U-SETUP
Area selection = All areas this system
Hook method selection = No hook signalling
Simplex/Duplex selection = Duplex
Basic Service Information = Speech + Clear mode + Point-to-point + One slot
Request to transmit/send data = Not valid (for duplex operation)
Call priority = Priority not defined
Called party type identifier = TSI
Called party SSI = SSI of co-target
Called party extension = MNI of co-target
External subscriber number = Not provided
Facility = Not provided
Proprietary = Not provided
```

This shall be described using the TARGET\_ACTIVITY\_MONITOR\_ind as follows:

```
ActivityType =
{
TETRASpeech,
FromTarget,
Point2Point
}
Co-targetAddress =
{
TETRAaddress!MNI = MNI of co-target,
TETRAaddressSSI = SSI of co-target
}
```

---

### C.2 Target registration

For a TETRA user (target) registering to the TETRA SwMI the message (U\_LOCATION\_UPDATE\_demand) may take the following form:

```
U-LOCATION UPDATE DEMAND ::=
PDU type = U-LOCATION UPDATE DEMAND
Location update type = ITSI attach
Request to append LA = False
Cipher control = Ciphering on
Ciphering parameters = TEA1, DCK, null
Class of MS = 'bit map as appropriate'
Energy saving mode = Not provided
LA information = Not provided
SSI = Target SSI
Address extension = Target MNI
Group identity location demand ack = Not provided
Group identity location demand = Not provided
Proprietary = Not provided
```

This shall be described using the TARGET\_ACTIVITY\_MONITOR\_ind as follows:

```
ActivityType =  
{  
  Session_registration,  
  FromTarget  
}  
TargetAddress =  
{  
  TETRAaddress!MNI = MNI of target,  
  TETRAaddress!SSI = SSI of target  
}
```

The encryption parameters will be used by the SwMI to start an authentication exchange which will be notified to the intercept function in a later message.

---

Annex D (informative):  
Void

## Annex E (normative): ASN.1 Data definitions

Annex E brings together the data definitions described in clauses 5 and 6.

The data definitions for lawful interception used in TS 101 671 [10] are in the form of ASN.1 data types. The data definition rules given in annex D of TS 101 671 [10] shall apply, i.e. data shall be defined according to ITU-T Recommendation X.680 [12], and follow the Basic Encoding Rules (BER) defined in ITU-T Recommendation X.690 [13].

NOTE: The ASN.1 Module defined in the present document is named under the ETSI document tree and does not form a leaf of the ETSI LI tree as defined in TS 101 671 [10].

Extension markers are not used in the ASN.1 module as the module is used in the SDL simulation model which does not support such markers. Instead the module identity contains the intercept version which shall be incremented on any change to the published module.

```
EN301040 {itu-t (0) identified-organization (4) etsi (0) en301040 (1040) interceptVersion (0)}
```

```
DEFINITIONS AUTOMATIC TAGS ::=
```

```
BEGIN
```

```
LIACTIVATEreq ::= SEQUENCE
```

```
{
  timeStamp          UTCTime,
  invokeId           INTEGER,
  targetAddress      AddressType,
  expiryDateTime     UTCTime,
  targetname         VisibleString      OPTIONAL,
  additionaltargetdata VisibleString    OPTIONAL,
  monitorServiceList SEQUENCE OF ActivityType
}
```

```
LIACTIVATEconf ::= SEQUENCE
```

```
{
  timeStamp          UTCTime,
  invokeId           INTEGER,
  result             BOOLEAN,
  tLIInstanceid     TLIIdType          OPTIONAL -- Conditional on value of Result --
}
```

```
LIMODIFYreq ::= SEQUENCE
```

```
{
  tLIInstanceid     TLIIdType,
  timeStamp          UTCTime,
  modificationNumber INTEGER,
  modificationType  CHOICE
  {
    halt             BOOLEAN,
    reset            BOOLEAN,
    expiryDateTime   UTCTime,
    targetname       VisibleString,
    additionaltargetdata VisibleString,
    monitorServiceList SEQUENCE OF ActivityType
  }
}
```

```
LIMODIFYconf ::= SEQUENCE
```

```
{
  tLIInstanceid     TLIIdType,
  timeStamp          UTCTime,
  modificationNumber INTEGER,
  result             BOOLEAN
}
```

```

LISTATUSInd ::= SEQUENCE
{
    tLIInstanceid          TLIIIdType,
    timestamp              UTCTime,
    tETRASysStatus        StatusType
}

TARGETACTIVITYMONITORInd ::= SEQUENCE
{
    tLIInstanceid          TLIIIdType,          -- header, who -
    timestamp              UTCTime,            -- header, when -
    targetLocation         LocationType,        -- header, where -
    targetAction           ActivityType,
    supplementaryTargetaddress AddressType      OPTIONAL,
    cotargetaddress        SEQUENCE OF AddressType OPTIONAL,
    cotargetlocation       SEQUENCE OF LocationType OPTIONAL
}

TARGETCOMMSMONITORInd ::= SEQUENCE
{
    tLIInstanceid          TLIIIdType,
    timestamp              UTCTime,
    targetLocation         LocationType,
    supplementaryTargetaddress AddressType      OPTIONAL,
    targetcommsid          CircuitIdType,
    cotargetaddress        SEQUENCE OF AddressType OPTIONAL,
    cotargetcommsid        SEQUENCE OF CircuitIdType OPTIONAL
}

TTRAFFICInd ::= SEQUENCE
{
    tLIInstanceid          TLIIIdType,
    trafficPacket          BIT STRING
}

CTTRAFFICInd ::= SEQUENCE
{
    tLIInstanceid          TLIIIdType,
    trafficPacket          BIT STRING
}

ActivityClassType ::= ENUMERATED
{
    allServices,
    tETRASpeech,
    singleSlotData24,
    singleSlotData48,
    singleSlotData72,
    multiSlotData224,
    multiSlotData248,
    multiSlotData272,
    multiSlotData324,
    multiSlotData348,
    multiSlotData372,
    multiSlotData424,
    multiSlotData448,
    multiSlotData472,
    sDSType1,
    sDSType2,
    sDSType3,
    sDSType4,
    status,
    sDSACKType1,
    sDSACKType2,
    sDSACKType3,
    sDSACKType4,
    statusack,
    sDSAcknowledgementsuccess,
    sDSAcknowledgementfail,
    sCLNSPacketData,
    consPacketData,
    internetProtocol,
    swMIauthenticationsuccess,
    swMIauthenticationfail,
    iTSIauthenticationsuccess,
    iTSIauthenticationfail,
    oTARSCKsuccess,
    oTARSCKfail,
}

```

```

oTARGCKsuccess,
oTARGCKfail,
oTARCCKsuccess,
oTARCCKfail,
tARGETSUSSCRIPTIONDISABLEDT,
tARGETEQUIPMENTDISABLEDT,
tARGETSUSSCRIPTIONDISABLEDP,
tARGETEQUIPEMENTDISABLEDP,
tARGETSUBSCRIPTIONENABLED,
tARGETEQUIPMENTENABLED,
sessionregistration,
sessionderegistration,
mIGRATION,
rOAMING,
supplementaryService
}

ActivityType ::= SEQUENCE
{
    activityClassType           ActivityClassType,
    callRelation                ENUMERATED
    {
        begin,
        end,
        continue,
        report
    },
    direction                   ENUMERATED
    {
        toTarget,
        fromTarget
    } OPTIONAL,
    scope                        ENUMERATED
    {
        pointToPoint,
        pointToPointMultiPoint,
        broadcast
    } OPTIONAL,
    cPlaneData                 BIT STRING                OPTIONAL,
    sSType                      SSType                    OPTIONAL
}

AddressType ::= SEQUENCE
{
    tSI                         TSISyntax,
    supplementaryAddress         SEQUENCE OF TETRAAddressType OPTIONAL
}

TETRAAddressType ::= CHOICE
{
    tETRAAddress                TSISyntax,
    pISNaddress                 NumericString (SIZE (20)),
    iP4address                   BIT STRING (SIZE (32)),           -- 32 bits -
    iP6address                   BIT STRING (SIZE (128)),           -- 128 bits -
    e164address                 NumericString (SIZE (20)),
    tEI                          TEISyntax
}

CellIdType ::= BIT STRING (SIZE (16))           -- 16 bits -

LocationAreaType ::= BIT STRING (SIZE (14))     -- 14 bits, as defined in EN 300 392-2 -

LocationType ::= CHOICE
{
    mSLoc                       TETRACGISyntax,
    lSLoc                       TETRAAddressType
}

MCCType ::= BIT STRING (SIZE (10))             -- 10 bits, as defined in EN 300 392-1 -

MNCType ::= BIT STRING (SIZE (14))             -- 14 bits, as defined in EN 300 392-1 -

SSISyntax ::= BIT STRING (SIZE (24))           -- 24 bits, as defined in EN 300 392-1 -

CircuitIdType ::= NumericString (SIZE (20))

```

```

SSType ::= ENUMERATED
{
  ambienceListening,
  adviceofCharge,
  accessPriority,
  areaSelection,
  barringofIncomingCalls,
  barringofOutgoingCalls,
  callAuthorizedbyDispatcher,
  callCompletiontoBusySubscriber,
  callCompletiononNoReply,
  callForwardingonBusy,
  callForwardingonNoReply,
  callForwardingonNotReachable,
  callForwardingUnconditional,
  callingLineIdentificationPresentation,
  callingConnectedLineIdentificationRestriction,
  connectedLineIdentificationPresentation,
  callReport,
  callRetention,
  callWaiting,
  dynamicGroupNumberAssignment,
  discreetListening,
  callHold,
  includeCall,
  lateEntry,
  listSearchCall,
  priorityCall,
  preemptivePriorityCall,
  shortNumberAddressing,
  transferofControl,
  talkingPartyIdentification
}

StatusType ::= ENUMERATED
{
  networkFullyAvailable,
  networkErrorsAffectingIntercept,
  reconfigurationInProgress,
  sessionExpired,
  gatewayServicesUnavailable
}

TETRACGIType ::= SEQUENCE
{
  mcc          MCCType,
  mnc          MNCType,
  lai          LocationAreaType,
  cI           CellIdType          OPTIONAL
}

TLIIIdType ::= BIT STRING (SIZE (16))  -- 16 bits -

TSIType ::= SEQUENCE
{
  mcc          MCCType,
  mnc          MNCType,
  ssi          SSIType
}

TEIType ::= BIT STRING (SIZE (60)) -- 60 bits, as defined in EN 300 392-1 -

END

```



---

## Annex F (informative): Bibliography

ETSI TS 102 234: "Lawful Interception (LI); Service-specific details for internet access services".

ETSI TR 101 514: "Digital cellular telecommunications system (Phase 2+); Lawful interception requirements for GSM; (GSM 01.33)".

ETSI ETS 300 393-1: "Terrestrial Trunked Radio (TETRA); Packet Data Optimized (PDO); Part 1: General network design".

ETSI ETS 300 393-2: "Terrestrial Trunked Radio (TETRA); Packet Data Optimized (PDO); Part 2: Air Interface (AI)".

ETSI ETR 086-3: "Trans European Trunked Radio (TETRA) systems; Technical requirements specification; Part 3: Security aspects".

ISO 7498-2: "Information processing systems - Open Systems Interconnection - Basic reference model - Part 2: Security Architecture".

ETSI ETS 300 393-7: "Terrestrial Trunked Radio (TETRA); Packet Data Optimized (PDO); Part 7: Security".

ETSI ETS 300 396-1: "Terrestrial Trunked Radio (TETRA); Technical requirements for Direct Mode Operation (DMO); Part 1: General network design".

ETSI EN 300 396-2: "Terrestrial Trunked Radio (TETRA); Technical requirements for Direct Mode Operation (DMO); Part 2: Radio aspects".

ETSI EN 300 396-3: "Terrestrial Trunked Radio (TETRA); Technical requirements for Direct Mode Operation (DMO); Part 3: Mobile Station to Mobile Station (MS-MS) Air Interface (AI) protocol".

ETSI EN 300 396-6: "Terrestrial Trunked Radio (TETRA); Direct Mode Operation (DMO); Part 6: Security".

ETSI ETR 330: "Security Techniques Advisory Group (STAG); A guide to legislative and regulatory environment".

CM(95)101: "Council of Europe Recommendation on Problems of Criminal Procedural Law connected with Information Technology" (Strasbourg, 31 July 1995,(adopted 7-8 September 1995)).

Draft TR-45 TIA/EIA SP-3580A: "Lawfully Authorized Electronic Surveillance".

ITU-T Recommendation X.219: "Remote operations: Model, notation and service definition".

ITU-T Recommendation X.229: "Remote operations: Protocol specification".

ETSI ETS 300 402-1: "Integrated Services Digital Network (ISDN); Digital Subscriber Signalling System No. one (DSS1) protocol; Data link layer; Part 1: General aspects [ITU-T Recommendation Q.920 (1993), modified]".

ETSI ETS 300 402-2: "Integrated Services Digital Network (ISDN); Digital Subscriber Signalling System No. one (DSS1) protocol; Data link layer; Part 2: General protocol specification [ITU-T Recommendation Q.921 (1993), modified]".

"Technical Directive setting forth Requirements as provided for by §13 of the Telecommunications Traffic Interception Ordinance (TR FÜV)", Bundesamt für Post and Telekommunikation, Version 2.0, April 1997.

GHIS 2.0: "Government Handover Interface Specification" (UK).

"Support and evaluation of prototype TETRA (Trans-European Trunked Radio) equipment for demonstration and development programmes", Shakeshaft, N.E., 1995, K2a. M.Eng., Bath - 45-8233.

ISO/IEC 11572 (1996): "Information technology - Telecommunications and information exchange between systems - Private Integrated Services Network - Circuit mode bearer services - Inter-exchange signalling procedures and protocol".

ISO/IEC 11582 (1995): "Information technology - Telecommunications and information exchange between systems - Private Integrated Services Network - Generic functional protocol for the support of supplementary services - Inter-exchange signalling procedures and protocol".

ITU-T Recommendation. X.209: "Specification of basic encoding rules for Abstract Syntax Notation One (ASN.1)".

---

## History

<b>Document history</b>		
V1.1.1	May 1997	Publication as TS 101 040
V1.1.1	April 1998	Publication as EG 201 040 (Historical)
V2.0.0	June 1999	Publication
V2.0.5	February 2005	Public Enquiry PE 20050610: 2005-02-09 to 2005-06-10
V2.1.0	December 2005	Vote V 20060224: 2005-12-26 to 2006-02-24
V2.1.1	March 2006	Publication